

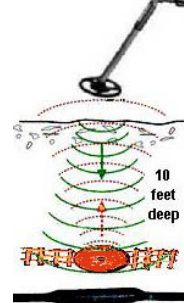


**Innovative Electronic  
Marker Products**

## “SPLICEGARD™” EM-10



Marks Buried Splices



**Operating Principle:**

- Transmitter sends signal and listens for signal return.
- Marker receives signal and returns it to locator.
- Signal strength increases as locator gets nearer to buried marker.
- Marker range: 10 Feet

### **Innovative Combination Electronic Marker and Digging Shield Helps Prevent Digger Hits to Buried Splices**

Now you can locate buried splices without wasting time or risking damage to cable, splices and other buried facilities.

**TELEMARK SPLICEGARD**

**“The Best Way to Mark, Find, and Protect Underground Splices”**

This innovative combination consists of three basic elements:

- Durable orange plastic shield protects the buried splice from shovels and back- hoes.
- Electronic Marker attached to SpliceGard easily and quickly locates buried splices.
- Works with any marker locator made by Rycom™, 3M™, Metrotech™, Tempo™, Dynatel™ and EMSII.  
(operates on standard designated 169.8 kHz power frequency)

**GPS + GIS**

Provides up-to-date facilities asset management when used in conjunction with hand held GPS and GIS mapping database.

X,Y,Z PinPoint Field Locating 2” accuracy is easily achieved with low cost GPS and electronic marker locators.

**“SPICEGARD™” EM-10**  
**PROTECTS YOUR BURIED PLANT FROM DAMAGING DIG-INS**

The Telecom and utility industry continues to evolve at an ever increasing rate. This growth and development places new demands on outside plant construction and maintenance to design and install reliable systems featuring damage prevention products.

**EASY TO USE**

- Place:** Place SpliceGard one foot above buried splice (cable tie optional). Back fill to grade.
- Locate:** Identify SpliceGard location with marker locator.
- Excavate:** Excavate to SpliceGard and remove.
- Reentry:** Hand dig to buried splice.
- Backfill:** Replace SpliceGard.

<b>PRODUCT SPECIFICATIONS - ORDERING INFORMATION</b>			
<b>Product Name</b>	<b>SpliceGard</b>	<b>Depth Range</b>	<b>10 feet</b>
<b>Model Number</b>	<b>EM-10</b>	<b>Power Frequency</b>	<b>169.8 kHz</b>
<b>Size</b>	<b>48" x 16" x 1"</b>	<b>Operating Temp</b>	<b>-30° to 160° F</b>
<b>Weight</b>	<b>1.0 lb.</b>	<b>Storage Temp</b>	<b>-40° to 167° F</b>
<b>Packaging:</b>	<b>10 units / case</b>	<b>Color Code</b>	<b>Red</b>

Important notice to purchasers: All statements, technical information and recommendations contained herein are based on information we believe to be reliable, but the accuracy and completeness thereof is not guaranteed. The following is made in lieu of all warranties, expressed or implied: Telemark Solutions™ Inc.'s obligation shall be to repair or replace any Telemark product proven to be defective within one year after shipment. Neither seller nor manufacturer shall be liable for injury, loss or damage, direct or consequential, arising out of the use of this product. User shall determine suitability of product for his intended use. User assumes all risk and liability in the use of the product. No statement or recommendation contained herein shall have any force or effect unless in an agreement signed by officers of Telemark Solutions™ Inc. Telemark and SpliceGard are trademarks of Telemark Solutions™ Inc. Patented

**Telemark Solutions™**  
**302 Wright Drive**  
**Georgetown, Texas 78628**  
**Ph / Fax: 512-869-8855**  
**Email: [Telemark@texas.net](mailto:Telemark@texas.net)**  
**[www.telemarksolutions.com](http://www.telemarksolutions.com)**