



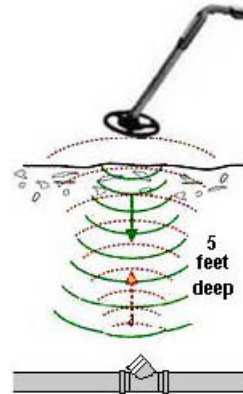
**Telemark™
Solutions**

**Innovative Electronic Marker Products
for Waste Water Construction**

“DUCKMARK™”



Locate Service Wye's



Operating Principle:

- Marker Locator* sends signal and listens for signal return.
- Marker receives signal and returns it to locator.
- Signal strength increases as locator gets nearer to buried marker.
- Marker range: 5 Feet
- Standard Waste Water Frequency 121.6kHz

**Combination Electronic Marker and Cap
Locate Plastic Pipes, Pipe Stubs,
Service Wye's & Stub-Outs Electronically**

IMPORTANT BENEFITS

- Combination PVC Plug or Cap and Electronic Marker
- Eliminates Guesswork
- *Works with any Electronic Marker Locator made by 3M™, Metrotech™, Tempo™, Dynatel™, EMSII and Rycom™
- Pipe Caps or Plugs Available in all Sizes
- Fastest Way to Locate Stubs and Wye's
- Available in Solvent Weld SDR-35 or Gasketed

APPLICATIONS

- Pipe Ends
- Service Wye's
- Building Stubs
- Clean-Outs

“DUCKMARK™”
BEST WAY TO LOCATE PLASTIC PIPES, TAPS, WYE'S & STUBS

EASY TO USE

- Place:** Attach Duckmark to End of Pipe or Wye.
- Backfill:** Backfill to Grade.
- Locate:** Locate with any Electronic Marker Locator made by 3M™, Metrotech™, Tempo™, Dynatel™, EMSII and Rycom™
- Excavate:** Excavate to Duckmark.

GPS + GIS

Provides up-to-date facilities asset management when used in conjunction with hand held GPS and GIS mapping database. X,Y,Z PinPoint Field Locating 2” accuracy is easily achieved with low cost GPS and electronic marker locators.

PRODUCT SELECTOR Waste Water Green ID

Pipe Size	4”	6”
ASTM D3034 Gasket Cap SDR 26 F-1336 Heavy Wall	DM4060 GS	DM8060 GS
Plug ASTM D3034 SDR 26 Solvent Heavy Wall	DM4060 SSP	DM8060 SSP
Cap ASTM D3034 SDR 26 Solvent Heavy Wall	DM4060 SSC	DM8060 SSC
Packaging/Carton	56	18
Range	5’	5’

Important notice to purchasers: All statements, technical information and recommendations contained herein are based on information we believe to be reliable, but the accuracy and completeness thereof is not guaranteed. The following is made in lieu of all warranties, expressed or implied: Telemark Solutions™ Inc.'s obligation shall be to repair or replace any Telemark product proven to be defective within one year after shipment. Neither seller nor manufacturer shall be liable for injury, loss or damage, direct or consequential, arising out of the use of this product. User shall determine suitability of product for his intended use. User assumes all risk and liability in the use of the product. No statement or recommendation contained herein shall have any force or effect unless in an agreement signed by officers of Telemark Solutions™ Inc. Telemark and Duckmark are trademarks of Telemark Solutions™ Inc. Patents pending.

Telemark Solutions™
302 Wright Drive
Georgetown, Texas 78628
Ph / Fax: 512-869-8855
Email: Telemark@texas.net
www.telemarksolutions.com